

ANIMAL AGRICULTURE & ENVIRONMENTAL STEWARDSHIP

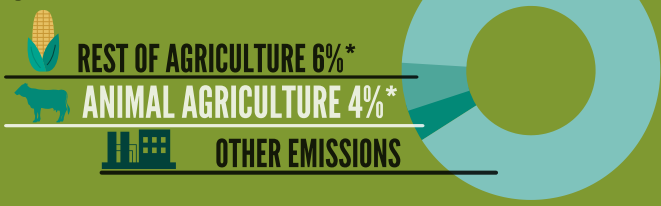


What does sustainability in animal agriculture mean?

Producing safe and nutritious animal protein while balancing economic viability, social responsibility, and environmental stewardship.



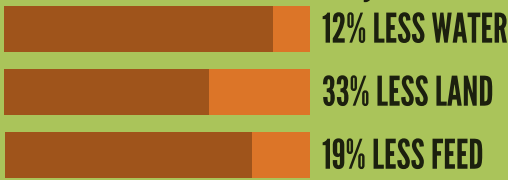
U.S. Agriculture's Greenhouse Gas Emissions



*ACCORDING TO THE EPA

BEEF CATTLE ENVIRONMENTAL STEWARDSHIP

Since 1977 the beef community has used:



THE BEEF COMMUNITY'S CARBON FOOTPRINT HAS BEEN REDUCED BY **16%** SINCE 1977

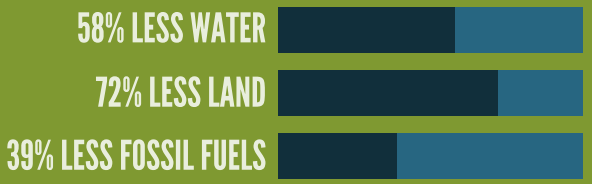
All while increasing the amount of beef available with fewer cattle in the U.S. inventory.

BROILER CHICKEN ENVIRONMENTAL STEWARDSHIP

CHICKEN PRODUCTION
PRODUCE 36% LESS GHG EMISSIONS SINCE 1965



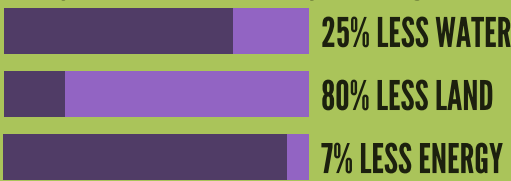
Today the broiler chicken community is using:



Thanks to enhancements in genetics and farm practices.

PIG ENVIRONMENTAL STEWARDSHIP

Today the pork community is using:



This is due to enhanced genetics and nutrition.

THE PORK COMMUNITY HAS REDUCED THEIR CARBON FOOTPRINT BY **7.7%** SINCE 1959

DAIRY ENVIRONMENTAL STEWARDSHIP

DAIRY FARMS SUPPLY **254** MILLION PEOPLE WITH THEIR **CALCIUM** REQUIREMENT

Since 2007, the dairy community is using:



All this while producing more milk with less cows.

LAYING HEN ENVIRONMENTAL STEWARDSHIP

Today the laying hen community is using:



EGG FARMERS HAVE REDUCED THEIR CARBON FOOTPRINT BY **71%** SINCE 1959

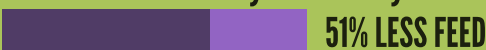
SHEEP ENVIRONMENTAL STEWARDSHIP

Sheep grazing pastures can prevent wildfires, manage noxious weeds, minimize erosion, and recycle nutrients back into the soil.



TURKEY ENVIRONMENTAL STEWARDSHIP

Since 1940 the turkey community has used:

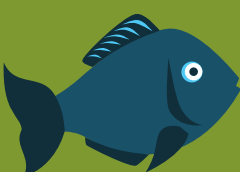


It once took **29 weeks** for a turkey to reach **35 pounds**. Today, turkeys are reaching **38 pounds** in **18 weeks** due to enhanced genetics and nutrition.



AQUACULTURE ENVIRONMENTAL STEWARDSHIP

Aquaculture helps **balance marine ecosystems** by contributing to the seafood supply, supporting commercial fisheries, **restoring marine habitats** and at-risk species and maintaining **economic activity** in coastal communities.



FOR MORE INFORMATION VISIT
ANIMALAGALLIANCE.ORG/ISSUES/SUSTAINABILITY

